



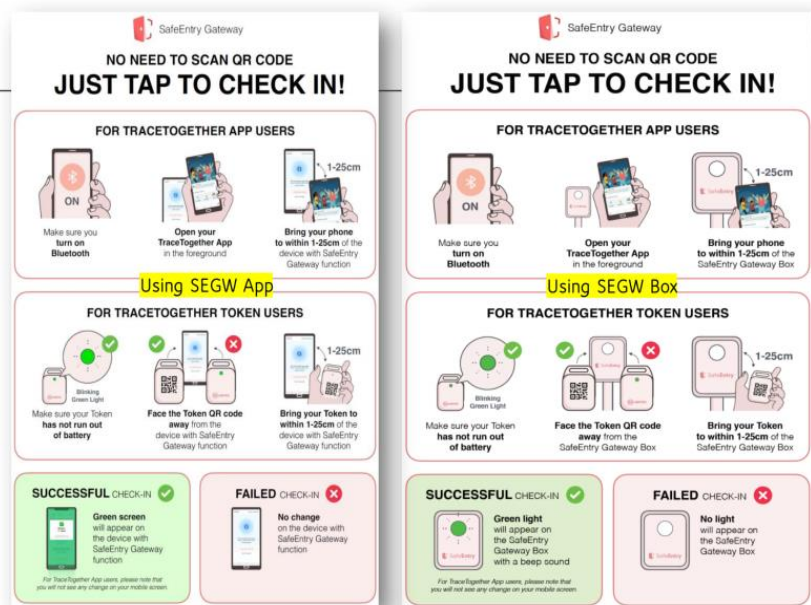
**Advisory on the COVID-19 Outbreak 2/2021 (as of 20 April 2021)**

**Onsite In-Person Congregational Worship Services**

1. Bethel began conducting onsite in-person worship services with up to 250 worshippers at any one time from 3 Jan 2021<sup>1</sup>, with the required safe management measures in place.<sup>2</sup>
2. From 19 Apr 2021, all congregational and other worship services having more than 100 persons will be required to deploy the SafeEntry Gateway (SEGW) at their main entrances as an additional check-in mode.<sup>3</sup> You are strongly encouraged to use the TraceTogether App or Token for this check-in mode.
3. Bethel has implemented the SEGW at its premise wef 10 April 2021. See Use of SEGW App / Box (Figure 1) and location of SEGW Boxes in Bethel (Figure 2). Previous modes of SafeEntry, such as QR or barcode scanning are still available.

Check-in Only

- Using:
- SEGW App or
  - SEGW Box
  - SEGW does not work with the SingPass Mobile app, it only detects the TT Token or App



**Figure 1: Use of SEGW App / Box**

<sup>1</sup> Bethel PC began onsite worship service in August 2020, with a maximum of 50 worshippers (including children) allowed at any one time. From 3 Oct 2020, the authorities allowed places of worship to conduct congregational and other worship services with up to 100 persons at a time, but Bethel decided to increase the capacity of onsite services to 80 due to various constraints. The maximum capacity for onsite worship services was increased by the authorities from 100 worshippers to 250 from 28 Dec 2020. Bethel began onsite worship services with up to 250 worshippers from 3 Jan 2021.

<sup>2</sup> MCCY's "Moving into Phase Three of Re-Opening for Religious Activities" issued on 26 Dec 2020, updated 31 Mar 2021 (cpro.gov.sg).

<sup>3</sup> *Ibid.* The SEGW will serve as an additional mode of SafeEntry check-in to provide quicker and more seamless check-in using the TraceTogether (TT) App or Token.

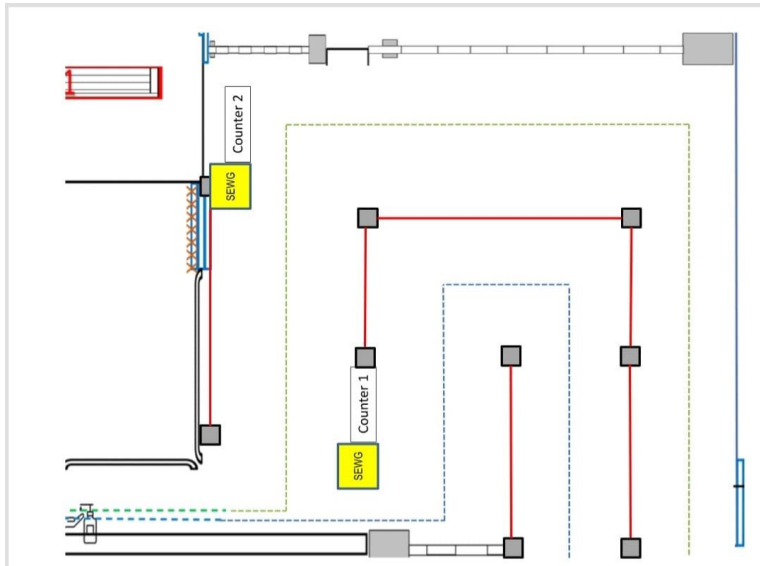


Figure 2: Location of SEGW Boxes (highlighted above in **Yellow**)

4. Bethel started permitting worshippers to sing live with masks worn properly during congregational worship services from 10 April 2021.<sup>4</sup> Worshippers are to wear their masks at all times.
5. Children 12 years and below, as well as persons who have health conditions that may result in breathing or other medical difficulties when a mask is worn for a prolonged period of time, may wear a face shield in lieu of a face mask.<sup>5</sup>

### Eligibility Criteria & Rules for Attending Onsite Congregational Worship Services

6. The following are the eligibility criteria for attending such services, which follow closely the advisories of the relevant government authorities, and are meant for the safety and wellbeing of the worshippers.
7. Worshippers with any of the following are *not* permitted to enter the church premise:
  - a. Recent travel abroad or close contact with a confirmed case of COVID-19 infection within the last 14 days;<sup>6</sup>
  - b. Still serving Leave of Absence, Stay Home Notice, Quarantine Order or Medical Leave;
  - c. Feeling unwell (including but not limited to respiratory symptoms, e.g. flu, cough, sore throat, etc.); or
  - d. Temperature > 37.5°C.<sup>7</sup>

<sup>4</sup> *Ibid.* From 5 April 2021, live-singing by worshippers is permitted during congregational worship services, with masks worn properly at all times.

<sup>5</sup> *Ibid.*

<sup>6</sup> Please see <https://www.moh.gov.sg/covid-19/faqs> for more information.

<sup>7</sup> Worshippers are advised to check your body temperature before coming to church. If it is >37.5°C, please do not come to church. See a doctor as soon as possible.

8. Worshippers with the following are *discouraged* from attending onsite in-person worship services, but instead encouraged to worship online, because they are more prone to severe COVID-19 infection and complications:
  - a. Age > 60 years;<sup>8</sup> or
  - b. Chronic diseases (e.g., obesity with BMI > 31, hypertension, diabetes, chronic heart & lung diseases, kidney diseases on dialysis, cancer, or blood clotting problems, etc.), or on treatments that cause immunosuppression (e.g., chemotherapy, long-term steroidal therapy, etc.)<sup>9</sup>
9. Photographs and/ or videos will be automatically captured by the thermal scanner for temperature monitoring purposes to protect worshippers and others. These photographs and videos will only be internally and securely stored in a local hard disk, and will be discarded after a period specified by the authorities.
10. To adhere to MCCY's ruling<sup>10</sup> (for congregational services exceeding 50 persons), different services have segregated their onsite worship into different zones, with each zone holding no more than 50 persons and implementation of undermentioned practices. Please refer to your own services' practice.
  - a. To prevent members from mingling with others from different zones, each zone is 3m apart and demarcated via the use of physical barriers.
  - b. Members must not cross the physical barrier (where applicable) or enter another zone that they are not assigned to.
  - c. There is also a separate ingress/egress for each zone or staggered entrance/exit timings so that worshippers from different zones do not mix with one another during entry/exit.
  - d. Toilets have also been marked and members should only use their designated zone toilets.
  - e. Members should not deliberately mingle before, during or after each worship service.
  - f. Wipe-down to be conducted at the end of each worship services.
  - g. Avoid sharing of equipment (e.g. musical instruments, microphones, props).
  - h. Worshippers are to worship in groups of not more than 8 persons. Groups of 8 must be at least 1 metre away from one another.
  - i. Offering bags will no longer be passed around but for members to instead drop their offerings into boxes at designated locations.
  - j. Elders to use hand sanitisers or wear gloves prior to serving their members with pre-packed 2-in-1 holy communion elements.
11. You may be turned away if you do not comply with any of the above safe management measures or guidelines.

---

<sup>8</sup> Please refer to the Ministry of Health's advisory on vulnerable groups at [https://www.moh.gov.sg/docs/librariesprovider5/advisories/advisory-on-vulnerable-group-\(moh\).pdf](https://www.moh.gov.sg/docs/librariesprovider5/advisories/advisory-on-vulnerable-group-(moh).pdf) dated 5 June 2020.

<sup>9</sup> *Ibid.* If unsure, please check with your doctor.

<sup>10</sup> MCCY's "Moving into Phase Three of Re-Opening for Religious Activities" issued on 26 Dec 2020, updated 31 Mar 2021 (cpro.gov.sg).

## **Conduct of Onsite Live Worship Service, Recording and Broadcast of Religious Services and Prayers**

12. Recording and broadcast of religious services and prayers will be continued to support members who are unable to attend onsite services. The time spent on-location for this activity should be kept as short as possible.
13. From 28 Dec 2020, live performance elements have been permitted during the worship service at places of worship, with the necessary safe management measures in place
  - a. A maximum of 30 persons are allowed to be involved in/support the conduct of the worship service. This includes persons on-stage, backstage or off-stage.
  - b. Up to 10 persons who are involved in the conduct of the worship service are allowed to unmask at any given time, of which up to 5 persons can be unmasked for singing. Persons should only unmask when required to perform their duties.
  - c. From 5 Apr 2021, persons involved in/supporting the conduct of the worship service will be allowed to sing while masked, within the prevailing cap of 30 persons. As a best practice, masked singers are to keep a 2-metre safe distance from other individuals.
  - d. There must be at least a 3-metre setback between persons involved in the conduct of live performance elements and worshippers.
14. The production team must also put in place safe management measures, including no-cross deployment between locations (where practicable), and thorough cleaning of technical equipment.

## **Conduct of Selected Onsite In-Person Church Ministries (besides congregational worship services)<sup>11</sup>**

15. The following onsite in-person church ministries have been officially permitted, subject to the current rules and regulations<sup>12</sup>, and restricted to the designated venues:
  - a. Pastoral visitations (e.g. home, hospital, wake visits) from 15 November 2020;
  - b. Cell group, youth and young adult gatherings/ fellowships from 21 November 2020.
  - c. Sunday school classes.<sup>13</sup>
  - d. Membership/ Baptism classes.
  - e. Pre-marital counselling classes.

---

<sup>11</sup> Other church ministries exclude Bethel Day Care and Preschool, which is under the purview of the childcare committee and Early Childhood Development Agency (ECDA); All Saints Memorial Chapel & All Saints Home which are under the purview of their respective Boards and the relevant authorities.

<sup>12</sup> MCCY's "Moving into Phase Three of Re-Opening for Religious Activities" issued on 26 Dec 2020, updated 31 Mar 2021 (cpro.gov.sg). Pre-booking of venue is required for these activities via [https://docs.google.com/forms/d/e/1FAIpQLSe1OsnU9rk4qNd4ktXv\\_oTTEnnNnUrt\\_n0MUISH1D1JNYeExQ/vie\\_wform?usp=sf\\_link](https://docs.google.com/forms/d/e/1FAIpQLSe1OsnU9rk4qNd4ktXv_oTTEnnNnUrt_n0MUISH1D1JNYeExQ/vie_wform?usp=sf_link)

<sup>13</sup> The church has considered it safe and beneficial to resume onsite Sunday school classes. The various services have started such classes in a stepwise manner from Nov 2020.

16. Special permission must be obtained from the church office for conducting onsite activities currently not permitted by the church. Each request will be assessed on a case-by-case basis.<sup>14</sup>
17. Religious rites and other religious activities (e.g. pastoral services, religious classes for adults and children) are to be conducted in gatherings not exceeding 50 persons, subject to safe distancing and other safe management measures appropriate to the nature of the religious activity. This is also subject to the total premise cap of 150 persons.
  - a. Each religious class must not exceed 50 persons, including the religious worker/teacher (and supporting workers, if any). As a best practice, we encourage a greater separation of 2 metres between groups of students attending religious classes.
  - b. Religious rites at places of worship may also involve live performance elements (non-wind) subject to the safe management measures.
18. Leaders and members are encouraged to continue to use remote means (e.g. Zoom, FaceTime, etc.) for the above ministries and meetings, and to communicate and minister to one another.

## Funerals and Wakes

19. Funerals and wakes are permitted but should involve not more than 30 persons at any one time (excluding religious and other supporting workers, which must be kept to a minimum).<sup>15</sup> From 24 Apr 2021, the cap for funerals and wakes will be increased to 50 attendees for the burial/cremation service only.
20. Live instrumental music (non-wind) is permitted from 28 Dec 2020 with the safe management measures in place.<sup>16</sup> Persons involved in/supporting the live instrumental

---

<sup>14</sup> Please use the following link for submitting such requests: [https://docs.google.com/forms/d/e/1FAIpQLSe1OsnU9rk4qNd4ktXv\\_oTTEnnnUrt\\_n0MUI5H1D1JNYeXQ/viewform?usp=sf\\_link](https://docs.google.com/forms/d/e/1FAIpQLSe1OsnU9rk4qNd4ktXv_oTTEnnnUrt_n0MUI5H1D1JNYeXQ/viewform?usp=sf_link)

<sup>15</sup> MCCY's "Moving into Phase Three of Re-Opening for Religious activities" issued 26 Dec 2020, updated 31 Mar 2021 (cpro.gov.sg). There must be strict adherence to precautionary measures, including registration of attendees to facilitate contact tracing, temperature screening, and use of SafeEntry and TraceTogether Apps. Unwell attendees, those who have travelled overseas in the last 14 days, or who are serving home quarantine or stay-home-notice must be turned away. There must be frequent cleaning and sanitisation of premises, including common areas and high-contact surfaces. Ventilation must be improved. Attendees must be reminded to observe personal hygiene and be socially responsible. There must also be strict observation of the authority's Density-Intensity-Duration guideline. **Density:** Density refers to the physical proximity between individuals. Safe-distancing of at least 1m between individuals, or groups (with each group made up of no more than 8 persons) and no physical contact must be adhered to at all times (including queuing), at all venues and during all rituals. **Intensity:** Intensity refers to the degree of release of droplets and hence must be minimized. Since singing is deemed as a high-intensity activity by the authorities, it will be prohibited. Wear a mask at all venues and during all rituals. Social interaction between attendees at wakes must also be minimised. **Duration:** Duration refers to the period of time individuals are exposed to one another, which must be kept to the minimum necessary by simplifying and limiting to essential rites. Attendees of wakes must be advised to not linger and leave as soon as possible.

<sup>16</sup> MCCY's "Moving into Phase Three of Re-Opening for Religious activities" issued 26 Dec 2020, updated 31 Mar 2021 (cpro.gov.sg).

music segment should be kept to the minimum. No other performances (e.g. singing, dance, variety act) are allowed.

21. Visits to columbaria at places of worship should be kept as short as possible, with no mingling between groups.
22. There must not be any reception with food and drinks.

### **Marriage Solemnizations<sup>17</sup>**

23. From 24 Apr 2021, up to 250 attendees will be permitted for marriage solemnizations if the wedding couple undergoes pre-event testing (PET), or have completed their COVID19 two-dose vaccination at least two weeks before the solemnisation. [Refer to the Ministry of Trade and Industry (MTI)'s website for further details on PET requirements.]. The 250-persons limit includes the bride and groom, the two witnesses and any other guests. The solemnizer and religious workers involved are excluded from the 250-persons limit.
24. If the total number of attendees is more than 48 (excluding the wedding couple), they must still be segregated into zones of up to 50 persons each. An individual attending the solemnization must remain within his or her respective assigned zone and must not enter an unassigned zone.
25. Attendees must maintain a 1-metre safe distance between groups except a core "wedding party"<sup>18</sup>, which is allowed to comprise up to 20 persons (including the couple and their two witnesses). There should be no intermingling or mixing between groups nor between the "wedding party" and these other groups.
26. Live instrumental music (non-wind) is also permitted from 28 December 2020, with the safe management measures in place.<sup>19</sup> Persons involved in / supporting the live instrumental music segment should be kept to the minimum. No other performances (e.g. singing, dance, variety act) are allowed.
27. Safe management measures should also be in place at the solemnization venue. Masks can momentarily be removed for identification of witnesses, during key moments such as exchange of marriage vows, exchange of rings and when the groom kisses the bride. Guests can be allowed to remove their masks and be less than 1m apart for a quick group photo with the couple after the ceremony.
28. There must not be any reception with food and drinks, or wedding celebrations that are not essential religious rites.

---

<sup>17</sup> *Ibid.*

<sup>18</sup> Besides the couple and their two witnesses, the core wedding party can comprise a group of close family and/or friends who are required or expected to interact with one another during the course of the solemnization.

<sup>19</sup> MCCY's "Moving into Phase Three of Re-Opening for Religious activities" issued 26 Dec 2020, updated 31 Mar 2021.

29. The solemnization should be kept short.
30. Video-link solemnization will continue to be available as an option for eligible couples who prefer to do so during this COVID-19 period, until further advised.

### **Regulations for Church Staff**

31. From 5 Apr 2021, Ministry of Manpower (MOM)<sup>20</sup> has approved for organisations to allow up to 75% of their staff to return to the workplace. However, Bethel will allow only up to 50% of staff to work in the office at any one time, in consideration of need and safety. Safe management measures must be strictly complied with while working in the office.<sup>21</sup>

### **Connectedness with God and One Another, Care and Concern for Others**

32. All members are encouraged to regularly connect with God through prayer, reading and meditating His Word and worshipping Him with spiritual hymns and songs, alone or with family members staying together, during this period.
33. All members are also encouraged to connect with other members via text messages, phone calls and other remote ways.
34. As Christians, we are called to show care and concern for our neighbours. We can do so by praying for COVID19-infected patients, their family members, healthcare professionals and other frontline workers, foreign workers, government authorities, the nation and the world. We can also contribute to the church's love offering and Safe Sound Sleeping Place (S3P@Bethel) ministry to assist those in need, and in other ways.
35. We should not discriminate or criticize baselessly. Instead, we should do our part to support the fight against this outbreak, and be channels of God's blessing.

### **Evolving Nature of Outbreak and Update of Advisory**

36. In view of the evolving nature of COVID-19 pandemic, the advisory will be updated as and when circumstances demand.

**Issued by Bethel Presbyterian Church  
20 April 2021, 4pm**

---

<sup>20</sup> [Requirements for Safe Management Measures at the workplace \(mom.gov.sg\)](https://www.mom.gov.sg/requirements-for-safe-management-measures-at-the-workplace)

<sup>21</sup> Refer to Guidelines on Safe Management Measures for Bethel Presbyterian Church version 05/2020 dated 30 December 2020.